

# Follow Your Call

- Convenient
- Affordable
- Relational



## 2025-2026 Student Catalog

### Welcome to MNSOM

# Welcome to MNSOM

*Ephesians 2:10 says, "For we are God's handiwork, created in Christ Jesus to do good works, which God prepared in advance for us to do". If you stop and think about it, isn't that an amazing concept? The God of the universe has set aside work that He has prepared, provided for and entrusted for you to accomplish!*

*At the Minnesota School of Ministry (MNSOM) we take this Scripture very seriously and are prepared to help you meet the challenge God has set before you. Whether you are taking the first steps toward receiving Assemblies of God credentials, upgrading your current credentials or just want to take classes to enrich your personal walk with God, we are here to do all that we can to support you in your efforts!*

*Pam Lund*

MNSOM Director | Internship Director



### We are here to help!



MNSOM.org

### Minnesota School of Ministry

Minnesota District of the  
Assemblies of God

1315 Portland Ave. S.  
Minneapolis, MN 55404-1454

Office (612) 332-2400  
Fax (612) 332-2510  
email: [mnsom@mnaog.org](mailto:mnsom@mnaog.org)

Se Habla Español

### 4 Locations to Serve You

#### Cloquet

Good Hope Church  
55 Armory Rd. S. Cloquet, MN 55720.  
Offering level 1 & 2 classes for Certified & Licensed level credentials

#### South Twin Cities

Celebration Church  
16655 Kenyon Ave, Lakeville, MN 55044  
Offering level 1, 2 & 3 classes for Certified, Licensed & Ordained level credentials

#### St. Cloud

City Hope Church  
413 Franklin Ave NE #0221, St Cloud, MN 56304  
Offering level 1 & 2 classes for Certified & Licensed level credentials

#### Spanish Track

Assemblies of God Minnesota District Office  
1315 Portland Ave S.  
Minneapolis, MN 55404

# Getting to Know MNSOM

## What is MNSOM?

The Minnesota School of Ministry (MNSOM) is a part of a nationwide Assemblies of God ministry to help men and women 18 or older answer the call of God on their lives for ministry. There are 38 District Schools of Ministry across the United States. MNSOM operates in collaboration with the Minnesota District Council and the Midwest Latin American District of the Assemblies of God.

MNSOM provides the academic requirements for those pursuing or upgrading credentials with the Assemblies of God. MNSOM also welcomes those who would like to receive foundational training to develop practical ministry skills to use in their church and communities.

There are various ways in which a person can acquire the academic requirements for Assemblies of God credentials. Life circumstances may make it impractical to attend an Assemblies of God college or university. Self-study courses, such as Berean/Global University, are an alternative course of study as well. However, many find success within MNSOM's study format offering an ideal blend of both self-study and a one-day-a-month classroom experience. MNSOM students benefit greatly from face-to-face interaction with instructors and other students. It also provides meaningful networking opportunities with District officials and pastors from across the state.

Ministers everywhere find they are constantly seeking to keep a healthy balance between family, ministry and, many times, bi-vocational employment. Additionally, due to distance, those who serve in rural Minnesota communities have the additional challenge of travel limitations. MNSOM fills those crucial needs within the Minnesota District Assemblies of God fellowship by providing non-traditional education formats that allows participation by all.

Whether you are looking to begin the journey toward credentialing, upgrade your credentials, or increase your Biblical and doctrinal knowledge, we're here to help you prepare for the ministry God has for you!

## MNSOM History

MNSOM opened its doors in April 2011 in Red Wing, Minnesota with six students completing twenty-three classes in the first year.

Now, more than thirteen years later, MNSOM operates at four convenient locations. The English track classes are held in the south Twin Cities area at Celebration Church in Lakeville, in St. Cloud at Hope City Church and in Cloquet at Good Hope Church. The Spanish track is held at the Assemblies of God District Office in downtown Minneapolis.

Currently, MNSOM serves over 300 students who have completed more than 900 classes in the past year.



## Endorsement

The Minnesota School of Ministry (MNSOM) is recognized and endorsed by the Executive Presbytery of the General Council of the Assemblies of God as a District-based Bible Institute. MNSOM has also been recognized and endorsed by the Executive Presbytery of the Minnesota District Council of the Assemblies of God as an official ministerial training program for those seeking credentials through the Minnesota District Council of the Assemblies of God.



Welcome to MNSOM

## Frequently Asked Questions

# Frequently Asked Questions

## Who Are the Instructors?

The Minnesota District of the Assemblies of God is blessed to have an excellent number of talented college professors, district officials and credentialed ministers and missionaries who have a passion and desire to invest in the next generation of pastors and ministers. The MNSOM instructors and leadership fully subscribe to the *Statement of Fundamental Truths* of the Assemblies of God and support the principles and polity of the Assemblies of God.



## How Will I be Graded?

Students must attend the entire class, read the textbook and assigned readings, complete the Text Overview homework assignment, and successfully pass the course exam to receive credit for the course. Exams are formed from the questions on the Text Overview homework assignment. Students must receive a passing grade of at least 70 (C) in order to receive credit in MNSOM and also towards credentials.

The final grade is determined by the following:

- 20% - Class Attendance (granted for attending *entire* class session)
- 40% - Text Overview Homework (must be completed to attend class)
- 40% - Final Exam

## What Should I Expect at a MNSOM Weekend Class?

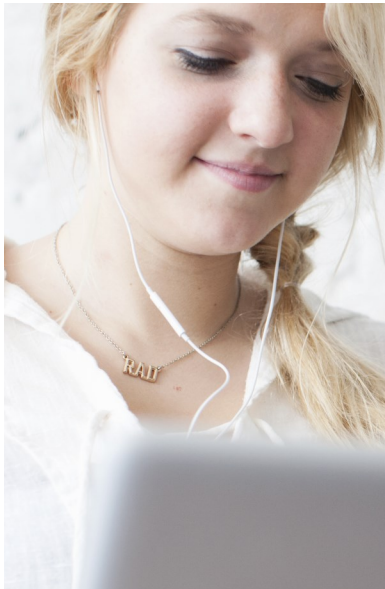
Class sessions are held on Saturdays, one day month from 8:30 a.m.–3:30 p.m. Registration opens at 8 a.m. Worship and devotions start promptly at 8:30 a.m. Homework, if required on paper, is collected upon arrival.

The first classroom session will provide students with a full review of the course materials and then the final exam is administered. During the remainder of the day, the focus will be on the practical applications of the topic with discussion of relevant issues in ministry today. Students are encouraged to ask questions as well as glean from the experience of the teaching staff. Course materials are graded and submitted along with final exams for a final course grade.

## What If I Register for a Class but Can't Attend?

Students unable to attend a course for which they have registered may request a transfer of their registration fee to a future MNSOM course. This emailed request to [mnsom@mnaog.org](mailto:mnsom@mnaog.org) must be made 24 hours prior to the class session for which they are initially registered. Then they need to complete the rollover form within 30 days listing to which class to apply the registration fee. A \$25 processing fee will be charged to complete the rollover tuition form on [www.mnsom.org](http://www.mnsom.org).

On rare occasions, classes may switch to being virtual on the Zoom platform due to inclement weather or cancelled because a required minimum of students did not enroll for a particular class. MNSOM staff will contact students via email if there are class changes.



Each class is four weeks long concluding with a Saturday in-person class. We offer classes 10 months of the year.

Three tracks are offered each month, one for each credentialing level:

- Level 1 Track: Certified Minister (100's)
- Level 2 Track: Licensed Minister (200's)
- Level 3 Track: Ordained Minister (300's)

### What is Expected of MNSOM Students?

Prior to class (date listed on schedule), students are required to read through an assigned textbook and, in some classes, additional reading materials. They will also need to complete a Text Overview homework assignment. In the month previous to the class, an average of fifteen hours of study is usually necessary to complete the homework. Combining preparatory time and classroom time with qualified instructors, students will invest approximately twenty hours per course.

For some of the classes (Faith & Action books), the Text Overview answers are *turned in online through Moodle*. If the Text Overview homework is required to be completed online, all answers must be entered by Friday at **NOON** of the day preceding the class.

For the other classes, the Text Overview is required to be *typed out on paper*. It will be turned in at the time of morning class check-in.

Attendance for the entire Saturday session is **mandatory** in order to meet the requirements for successfully completing the class and ultimately meet the academic requirements that qualify for Assemblies of God for credentialing.

### When I Complete the MNSOM Courses, Will I Automatically Receive Assemblies of God Credentials?

Required credential courses successfully completed through MNSOM fulfill the *academic requirements* of the General Council of the Assemblies of God for the respective level of credential with the Assemblies of God but do not guarantee credentials.

Obtaining credentials requires an extensive application procedure including gathering references, background checks, credit checks, interviews, attending a credentialing seminar and a written test. More information is at [mnaog.org/credentials](http://mnaog.org/credentials).



## Frequently Asked Questions

## Certified Ministers Track

### Level 1: Certified Minister Track

#### 112 Life of Christ

This course will concentrate on major events in the life of Christ, focusing on the time, place, circumstances, and people involved in the Lord's ministry. The goal of this class is to increase students' understanding of the Lord's message, ministry, and mission; inspiring them to be better ministers of the gospel of Jesus Christ.

#### 121 Introduction to Pentecostal Doctrine

This introductory course in Pentecostal theology provides an overview of biblical doctrines, based upon the Statement of Fundamental Truths of the Assemblies of God.

#### 122 AG History, Missions, and Governance

This course is designed to give the students an understanding of the historical development and governing policies of the Assemblies of God through the stories of significant people involved. It will pay particular attention to the General Council Constitution and Bylaws and their application to the national fellowship, district councils, local churches, and credentialed ministers.

#### 134 Ministerial Ethics (District Required Class)

This course will provide a general overview of the entire scope of ministerial ethics. It will address different ethical issues from biblical and theological perspective. The course will help the student establish basic methods and approaches to maintaining high ethical standards in their lives.

#### 136 Introduction to Hermeneutics I

An introductory course on the principles for interpreting the Bible, emphasizing both historical grammatical methods. The principles learned will equip the student to interpret appropriately the different genre of Scripture.

#### 137 Introduction to Hermeneutics II (136 Hermeneutics I is a pre-requisite)

This course examines the genres of scripture and their differences and uses. The principles learned will equip the student to interpret appropriately the different genre of Scripture.

#### 138 Spirit Empowered Churches

This class examines the heart of dynamic church growth: creating Spirit-empowered disciples who are involved in five activities—connect, grow, serve, go, and worship with love and power of God's Holy Spirit.

#### 140 Systematic Theology

An introduction to theology and a detailed study of the biblical teachings regarding God, Scripture, Man, Christ, Salvation, the Holy Spirit, the Church, and the End Times.

#### 141 Old Testament Survey

This course will serve as an introduction to the history, literature, and basic message of the Old Testament. The course will address major figures, events, and themes of the Old Testament and its foundational relationship to the New Testament.

#### 142 New Testament Survey

This course will serve as an introduction to the history, literature, and basic message of the New Testament. The course will address major figures, events, and themes presented in each of the New Testament books.

#### Internship

MNSOM offers an internship for all students pursuing credentials.

## Level 2: Licensed Minister Track

### 213 Romans

Paul's letter to the church in Rome is the most extensive theological presentation in the New Testament. For this reason, it has demanded the attention of biblical students in every era. Yet, there are significant passages in Romans that are paralleled in other New Testament writings, indicating that Paul is addressing important issues that are not entirely new.

### 223 Eschatology

An advanced study of the doctrine of the End Times, covering the topics of death, the return of Christ, the resurrection and rapture, the tribulation, the millennium, judgment, and the final states.

### 231 Introduction to Homiletics

A study in the preparation and delivery of sermons, with special emphasis on Pentecostal expository preaching.

### 232 Leadership Skills

A study in the principles of leadership, with practical application to leadership roles in Assemblies of God churches.

### 233 Conflict Resolution (District Required Class)

A study devoted to the resolution of conflict in the local church. The reasons for churches becoming unhealthy and how God wants to heal them are examined. The lordship of Jesus Christ and His methodology in resolving conflict form the basis of this study.

### 234 Introduction to Missions

An introductory course in the work of missions, both in general and with special reference to the Assemblies of God, noting recent developments, crucial issues, and current trends.

### 241 Local Church Evangelism

A theological and practical study of the Great Commission of sharing the Gospel with the world, both personally and in cooperation with other believers.

### 243 Acts

A study of the book of Acts with concentration on biblical theology, the historical background of events, and an emphasis on Luke's historical and theological narrative. Special attention will be given to the role of the Holy Spirit in the birth and development of the church.

### 245 Prison Epistles

This class is exegetical study of Paul's four Prison Epistles—Ephesians, Colossians, Philippians & Philemon. The class will concentrate on Paul's doctrinal and practical teachings particularly regarding the believer, the church, and human relationships.

### Internship

MNSOM offers an internship for all students pursuing credentials.

## Level 3: Ordained Minister Track

### 311 Pentateuch

A general introduction to the theology of the first five books of the Bible, noting particularly God's relationship with his creation and his covenants with his people, the nature of sin and redemption, and the importance of holiness in life and worship.

### 312 Psalms

In addition to the general overview of the book including their authorship, classification and function in the early church, selected Psalms will be studied in depth, understanding the historical setting, structure, meaning, and spiritual application of each.

### 314 Corinthians

An expository study of Paul's two Letters to the Corinthian church, highlighting his responses to the problems affecting it, his views of Christian character and ministry, and their relevance to the contemporary church.

### 322 Theology of Prayer

A study of biblical prayer, stressing the importance and impact of prayer in contemporary life and ministry.

### 324 Theology of Worship

An examination of the scriptural foundations and spiritual dynamics of corporate praise and worship.

### 331 Multicultural Ministry

A study in the principles, process, and problems of communicating from one culture to another, with special attention to developing proficiency in communicating the gospel to people from other cultures.

### 332 Pastoral Ministry (District Required Class)

A practical study of the pastoral ministry, including the pastor's call, preaching, teaching, church leadership, family life, and more.

### 334 Church Administration, Law, and Finance

A theological and practical study of the wide-ranging daily life issues of running a church—organizational, financial, legal, and people issues.

### 350 Ordained Practicum

("District Required Class" means it cannot be taken through another program such as Berean but must be taken through MNSOM.)

# 2025-2026 Class Schedule

	South Twin Cities Celebration Church-Lakeville	St. Cloud City Hope Church	Cloquet Good Hope Church	
<b>2025 Fall</b>	<b>September</b>	<b>September 20th</b> 122 AG History, Missions & Governance 233 Conflict Resolution 312 Psalms	<b>September 6th</b> 142 New Testament Survey 241 Local Church Evangelism	<b>September 13th</b> 121 Intro to Pentecostal Doctrine 232 Leadership Skills
	<b>October</b>	<b>October 18th</b> 141 Old Testament Survey 223 Eschatology 332 Pastoral Ministry	<b>October 4th</b> 134 Ministerial Ethics 233 Conflict Resolution	<b>October 11th</b> 142 New Testament Survey 245 Prison Epistles
	<b>November</b>	<b>November 15th</b> 134 Ministerial Ethics 138 Spirit Empowered Churches 213 Romans	<b>November 1st</b> 112 Life of Christ 223 Eschatology	<b>November 8th</b> 141 Old Testament Survey 233 Conflict Resolution
	<b>December</b>	<b>December 20th</b> 134 Ministerial Ethics 138 Spirit Empowered Churches	<b>December 6th</b> 138 Spirit Empowered Churches	<b>December 13th</b> 134 Ministerial Ethics 223 Eschatology
<b>2026 Winter/Spring</b>	<b>January</b>	<b>January 17th</b> 112 Life of Christ 241 Local Church Evangelism 331 Multicultural Ministry	<b>January 3rd</b> 121 Intro to Pentecostal Doctrine 213 Romans	<b>January 10th</b> 138 Spirit Empowered Churches 234 Introduction to Missions
	<b>February</b>	<b>February 21st</b> 142 New Testament Survey 234 Introduction to Missions 334 Church Administration	<b>February 7th</b> 136 Hermeneutics I 245 Prison Epistles	<b>February 14th</b> 112 Life of Christ 213 Romans
	<b>March</b>	<b>March 21st</b> 136 Hermeneutics I 231 Introduction to Homiletics 322 Theology of Prayer	<b>March 7th</b> 137 Hermeneutics II 234 Introduction to Missions	<b>March 14th</b> 122 AG History, Missions & Gov 243 Acts
	<b>April</b>	<b>April 25th</b> 137 Hermeneutics II 243 Acts 311 Pentateuch	<b>April 11th</b> 140 Systematic Theology 231 Introduction to Homiletics	<b>April 11th</b> 136 Hermeneutics I 241 Local Church Evangelism
	<b>May</b>	<b>May 23rd</b> 140 Systematic Theology 232 Leadership Skills 314 Corinthians	<b>May 9th</b> 141 Old Testament Survey 243 Acts	<b>May 16th</b> 137 Hermeneutics II 231 Introduction to Homiletics
	<b>June</b>	<b>June 20th</b> 121 Intro to Pentecostal Doctrine 245 Prison Epistles 324 Theology of Worship	<b>June 6th</b> 122 AG History, Missions & Governance 232 Leadership Skills	<b>June 13th</b> 140 Systematic Theology

-Classes **END** in-person on the dates listed above. Study independently 3-4 weeks before class date.  
 -Class 136 *Hermeneutics I* must be taken before 137 *Hermeneutics II*.

# Getting Started

# Getting Started

## Step 1 *Enroll in the School*

At MNSOM.org, click on Future Students to access and read the Student Handbook and complete the Enrollment Application steps, which include the one-time \$60 school application fee. The application fee is non-refundable and does not include individual course tuition fees or the cost of textbooks.

## Step 2 *Pastor's Recommendation*

All students are required to submit a pastor's recommendation unless they currently hold Assemblies of God credentials. The link to the pastor's recommendation form can be found on the MNSOM website under Getting Started. Your pastor will submit the form to the MNSOM office.

## Step 3 *Register for a Class*

After MNSOM receives your application and the completed Pastor's Recommendation form, we will contact you via email with information on how to register for classes and how to enter our Moodle platform to obtain homework and textbook information. Tuition is \$99 per course. There is an \$15 late fee if you register less than 3 weeks before a class. The book cost is not included in the class tuition and is purchased separately.

## Step 4 *Log into Moodle*

Moodle is the MNSOM website where you will access your textbook to purchase and Text Overview homework assignments for each course. After registering for your first MNSOM course, you will receive a confirmation email that will contain instructions. Half of the courses require homework be submitted on Moodle by the day before class and the other half of the courses require you to print your answers and bring it with you.

## Step 5 Order Your Textbook

Students are responsible for ordering their own textbook for each course. The link to purchase the textbook for each course can be found on the Moodle website on the course page. Textbooks are available from a variety of sources. Students may purchase books new, used or e-format, from wherever they choose.

## Step 6 Homework Assignment

Homework assignments for each class are located on the MNSOM Moodle website. After registering for your course you will receive a confirmation email that will give you the access information for your class on Moodle. MNSOM uses two types of Text Overview homework assignments. One type is the Bible Institute format where students type out answers and print a copy to bring to class. The other is completed online on Moodle and is due at *noon* the day before class. Reading the textbook and completing the homework typically takes 15 to 20 hours depending on the student's study habits. You must have the homework completed before class to attend. Forty percent of the grade is based on homework and the exam is also based on the homework.

## Step 7 Attend a Class

Classes meet one Saturday a month from 8:30 a.m.- 3:30 p.m. at all locations. Registration begins at 8:00 a.m. It is important that you arrive on time and bring your homework, textbook, and computer or notebook to take notes. Full day attendance is required to receive credit for the class. Exams consist of Multiple Choice, True/False, and/or Matching questions based on the homework. (No essays)

## Step 8 Internship

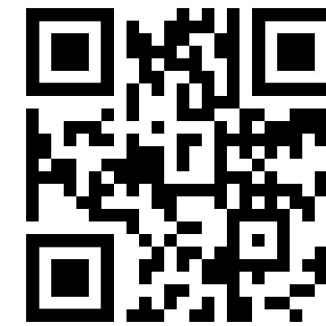
For those working toward credentials with the Assemblies of God, there is a required internship (minimum 6 months time commitment). You will register for the internship on MNSOM.org under *Internships & Credentialing* when you have 4 classes or more completed. There is no formal class setting for the internship but every July we do offer a seminar called Propel Internship Summit. The Internship Director works in tandem with the student's approved Ordained AG Mentor.

## Step 9 Credentialing

Completing MNSOM classes and internships are the first step toward pursuing Assemblies of God ministry credentials. Credentials require an extensive application procedure including references, recommendations, background checks, credit checks, interviews, a written test, credentialing seminar, etc. You can find more information about the credentialing process and the Credentialing Handbook with timeline on the Minnesota Assemblies of God website at [mnaog.org/credentials](http://mnaog.org/credentials).



Minnesota School  
of Ministry



website: [www.mnsom.org](http://www.mnsom.org)  
email: [mnsom@mnaog.org](mailto:mnsom@mnaog.org)

Minnesota District of the  
Assemblies of God

1315 Portland Ave. S.  
Minneapolis, MN 55404  
(612) 332-2400  
Se Habla Español

